



Taking the Pain Out of Tax with Microsoft Dynamics 365



The only constant in life is change. **And change happens a lot — especially when it comes to tax.** This can not only lead to havoc for tax and IT processes but also a higher risk of audit penalties that can impact the bottom line.

Another day, another change

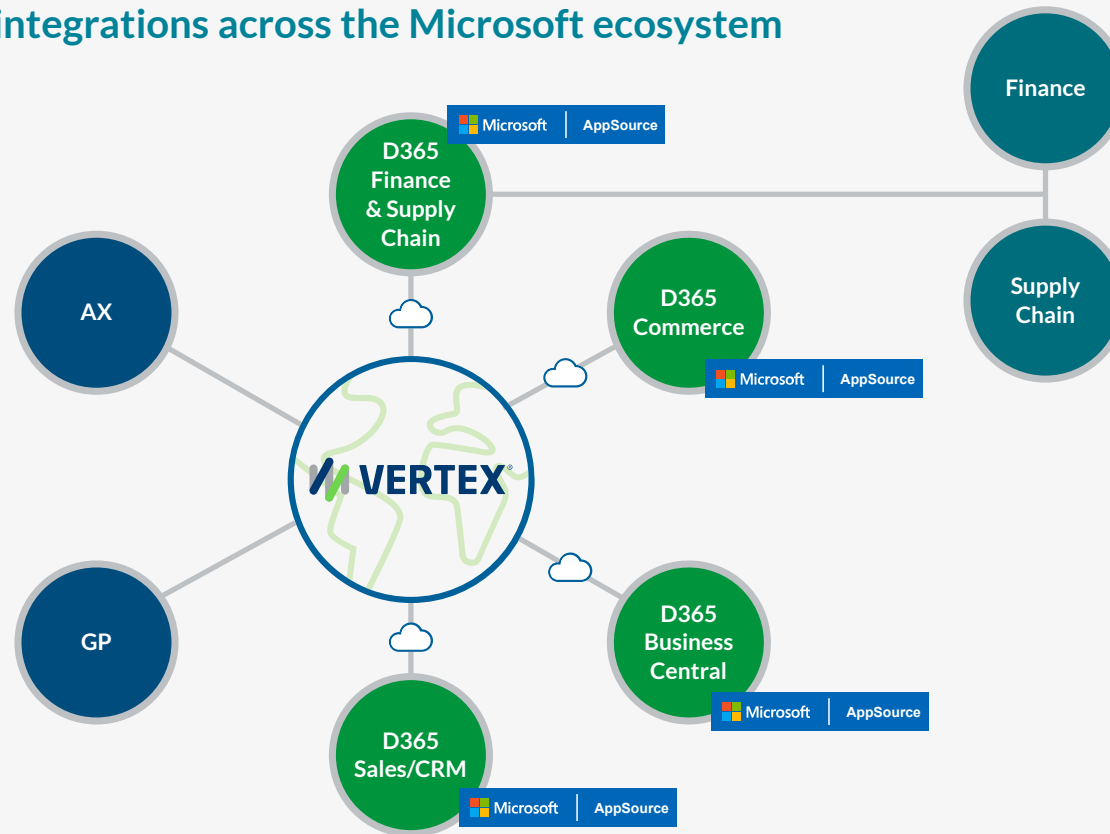
In the U.S., 45 states as well as the District of Columbia impose a sales tax, and 38 states add local taxes on top. That's more than 12,000 U.S. taxing jurisdictions to keep track of. Plus, they constantly change their rates and regulations. For companies doing business globally, there's over 19,000 taxing jurisdictions with different rates, regulations, and requirements. It's up to businesses to keep up with the latest tax rates and requirements to calculate sales, use, and value added tax (VAT) accurately on every transaction.



Integrating a 3rd party tax calculation engine

Many companies solve the problem by integrating a 3rd party tax engine to automate the maintenance of tax data and tax calculation across all their Microsoft D365 applications. The changing tax content is automatically maintained and updated in one central tax engine, then leveraged across multiple Microsoft Dynamics 365 applications. It serves as the single source for the latest tax data, complex tax calculations, and robust tax reporting for compliance and audit readiness. This not only improves tax accuracy and streamlines tax determination and compliance processes, but also reduces the burden on IT teams to maintain tax content in each Microsoft application. Since connectors can be made to multiple Microsoft applications, companies can standardize tax management and boost visibility and control.

Tax calculation integrations across the Microsoft ecosystem





Vertex for Microsoft D365 Business Central

Real-time calculation of sales and use tax

Vertex for Microsoft D365 Commerce

Real-time calculation of sales tax

Vertex for Microsoft D365 Finance & Supply Chain

Real-time calculation of sales, use, and value added tax

Vertex for Microsoft D365 Sales/CRM

Real-time calculation of sales tax

Vertex for Microsoft Dynamics AX

Real-time calculation of sales and use tax

Vertex for Microsoft Dynamics GP

Real-time calculation of sales tax



Benefits of integrating a tax engine across Microsoft D365 applications

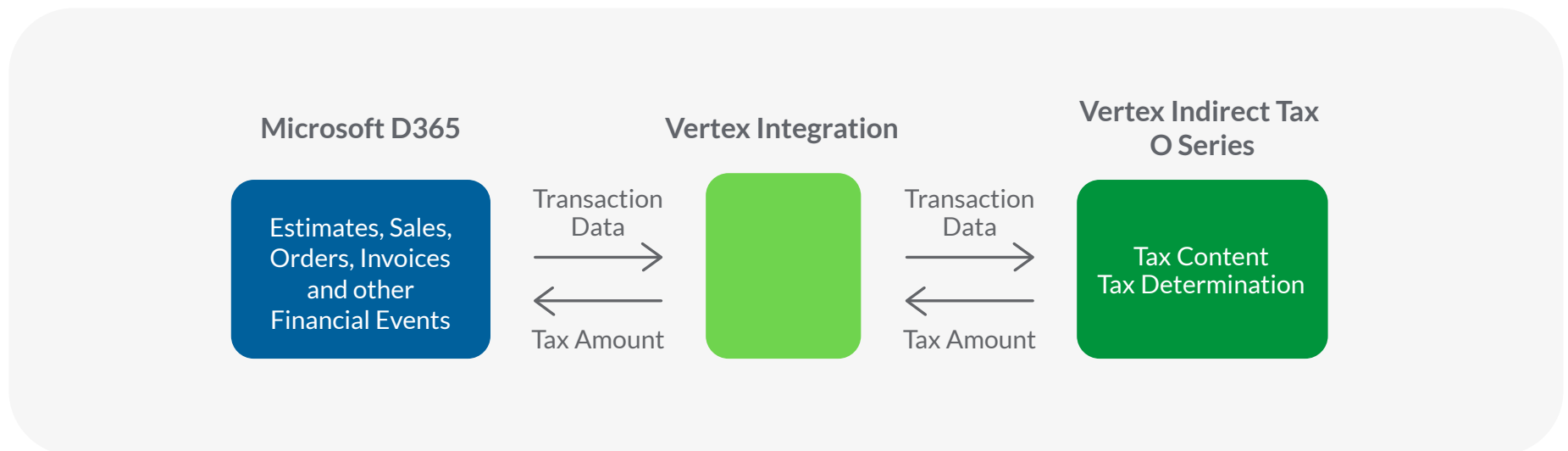
- **Automates** tax calculation and the maintenance of tax data
- **Eliminates** manual processes, freeing resources
- **Improves** tax accuracy, improving audit performance
- **Provides** better tax and compliance reporting and control
- **Increases** productivity for tax, finance, and IT teams
- **Creates** more streamlined OTC and P2P cycles

“Microsoft customers are focused on transforming their businesses leveraging automation to streamline every facet of their revenue operations,” said Kurt Springman, Director of Strategic Partner Development at Vertex. “Vertex solutions for Microsoft integrate seamlessly, providing a complete solution to automate tax calculation across Microsoft clouds. They also reduce compliance risk by extending the value of Microsoft solutions regardless of how or where our customers transact.”

How the Vertex solutions for Microsoft D365 work

Tax determination is quite complex because it relies on a multitude of taxability rules and transaction data points. But the whole process happens in real time once Microsoft solutions are connected to the Vertex tax engine. Here's how it works:

1. The Microsoft app sends the transaction data to the tax engine via an integration.
2. The Vertex tax engine applies address cleansing to ensure the ship-to address is complete and accurate, and mapped to the correct taxing jurisdiction.
3. Then, Vertex automatically calculates the tax based on the transaction details using the embedded tax rules and rates and sends the tax amount back to the Microsoft app through the integration to complete the quote or sales transaction.

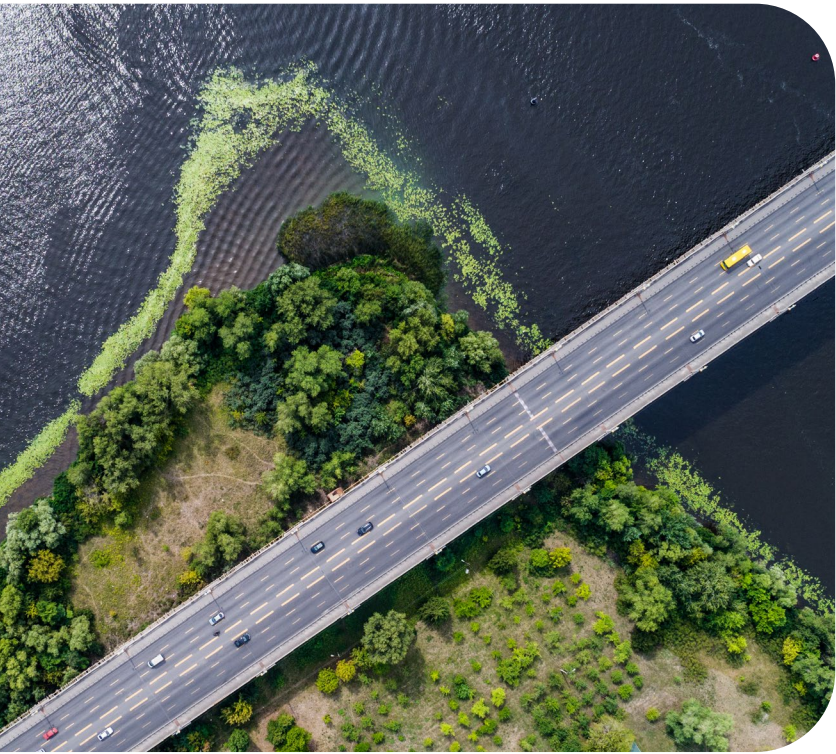


Vertex pulls the transaction details from Microsoft D365 to calculate indirect tax in Vertex O Series and send that tax amount back to Microsoft D365.



- Whenever a change is made in either the Vertex tax engine or a Microsoft module, experts modify the integrations as needed and the new release is made available to all users.
- The integrations undergo continuous improvement based on application performance monitoring, so it always reflects the most up-to-date capabilities to deliver peak performance.
- Updates to the functionality of the integrations reflect feature requests from across the Vertex-Microsoft customer base, so every user benefits from the best practices of the collective group.
- IT departments are freed from the cost, skill requirements, and man-hours required to maintain one-off integrations and provide help desk support to users experiencing problems.
- As the business implements additional Microsoft applications, they can be connected to the same Vertex tax engine for centralized, standardized tax processes.

As you can see, by leveraging the standardized Vertex integrations, Microsoft users establish a technology landscape that scales for growth and change.



Leveraging the power of a tax connector

In the hustle and bustle of attracting, serving, and billing customers, businesses don't want tax calculation errors to slow things down. By leveraging Vertex for Microsoft Dynamics 365, businesses reduce manual processes, stabilize process efficiency, improve audit performance, and reduce risk. They also establish a tax process that's more reliable and scalable to support business growth. Vertex has a 40-year history of automating tax calculation and is a proud Microsoft partner. Vertex solutions seamlessly integrate with Microsoft Dynamics 365, offering flexible deployment options and scalability to support enterprise growth across the organization and around the world.



North America

Latin America

Europe

Asia Pacific



VertexInc.com



Copyright © 2023 Vertex, Inc. All rights reserved. The information contained herein is intended for information purposes only, may change at any time in the future, and is not legal or tax advice. The product direction and potential roadmap information is not a guarantee, may not be incorporated into any contract, and is not a commitment to deliver any material, code, or functionality. This information should not be relied upon in making purchasing, legal, or tax decisions. The development, release, and timing of any features or functionality described for Vertex's products remains at the sole discretion of Vertex, Inc. Any statements in this release that are not historical facts are forward-looking statements as defined in the U.S. Private Securities Litigation Reform Act of 1995. All forward-looking statements are subject to various risks and uncertainties described in Vertex's filings with the US Securities and Exchange Commission ("SEC) that could cause actual results to differ materially from expectations. Vertex cautions readers not to place undue reliance on these forward-looking statements which Vertex has no obligation to update and which speak only as of their dates.